

**S LABS  
CATALOG**

Portobello



A close-up, low-angle shot of a light-colored wooden surface, possibly a desk or table, showing the natural grain and texture. In the upper right corner, the spine of a book is visible, slightly out of focus. The lighting is soft and directional, creating subtle shadows and highlights across the wood.

DESIGN

INNOVATION

SUSTAINABILITY

Portobello

# Portobello

A look that crosses through matter and makes individuality emerge. The original ingredient for being yourself.

To rediscover yourself is also to find expressions that represent you. A unique environment brings elements of identity that build a story. The story of each one, two, of the house, of the city. Individuality and community converse and define the particular and the common. Dreamed up, shared, lived spaces. Spaces with biography. Unique spaces.



# Portobello

What is inside matters. Your identity matters. Behind the scenes reveal the soul of the collection. We believe in the potential of the environment to accommodate attitudes and intentions. More than what is seen, that of which is special, the essence. Authenticity matters.

The materialization of the sustainable vision, of the conviction to create collectively, of the culture of innovation and the daily ~~of fact design~~ are synthesized in authentic solutions.

Authentic. Portobello 2023 Collection. Our essence for your identity.





## Portobello Grupo

Portobello emerged in 1979 with a proposal of innovation and design, qualities that guide the company's actions and which evolved into a set of differentials that bring the ESG principles. A global player in the sector, the Portobello Group, a large corporation, has a multichannel operation, in addition to specialized retail, distributes its products to the main home centers, offers specialized service to major works, direct to construction companies and the real estate market, and is present on five continents through distributors and its own operations in the United States.

Its manufacturing parks, in Tijucas (SC), where its headquarters is located, Marechal Deodoro (AL) and Baxter (TN), bringing together modern facilities that reinforce the company's technological innovation, with the production of more than 42 million square meters in 2022, which is complemented by partnerships with manufacturers in Brazil, Asia and Europe.

### QUALITY CERTIFICATES



## Portobello

The corporate and product brand of the Group represents the traditional operation of the floor and wall coatings trade, with headquarters next to the Tijucas industrial park in Santa Catarina and has a multichannel operation.

## Portobello Grupo



### Portobello shop

The group's retail unit has 147 stores, 25 of which are owned. It offers the most complete design experience in the world of ceramic tiles, accessories and the Oficina Portobello.



### Portobello America

A company with Portobello know-how and North American essence, creates, produces and distributes complete and competitive floor and wall coating solutions. Currently, it has two Distribution Centers, located in Florida and Tennessee, the headquarters of the company's industrial unit.



### POINTER

Pointer is the leading design brand in the red body ceramics industry. With operations in the Brazilian Northeast, in addition to exporting, the unit took the concept of democratic design to the market for classes B and C.

## PORTOBELLO ESG

We are aware of our actions and the consequences of our choices, with the responsibility of being agents of change in society and in the ecosystem in which we live. Transparency and growing together express our relationships and the way we do business. Our ambitions and actions make Portobello a Brazilian reference in ESG in our sector, with a strategic focus on Social, Environmental and Governance impact.



### E

Do more with less, ensuring that the use of natural resources occurs in a regenerative manner, with emphasis on the management of raw materials, water and the neutralization of emissions and waste.



### S

Guarantee an attractive diverse and inclusive environment for the best talents, who deliver results of excellence results and are protagonists in the social transformation of the communities in which we operate, sharing our values and knowledge.



### G

Be more sustainable together, engaging the entire ecosystem, inspiring collaborators, suppliers, partners, customers and the community, with our structured, transparent and compliant governance as a differential.



Visit for more information  
Visita para más información

## COMPLETE SOLUTIONS



### LASTRAS

Slabs represent a new paradigm for coatings in architecture, expanding the frontiers of the use of porcelain tiles, whether for projects and spaces, or for furniture design.



### OFFICINA PORTOBELLO

Unique solutions and customization systems in the art of porcelain tiles with the essence of Portobello. Innovation, design and high-quality furniture, special cuts and decor.



### PORTOBELLO DECOR

The translation of behavior and consumption trends into Portobello products. Design, textures, materials and technology are present in our collections focused on customization.



### SISTEMAS

Great architectural projects combined with Portobello design and technology. Solutions in ventilated facades and special services.



### NOVAS TECNOLOGIAS

Innovation is part of Portobello's DNA. New technology, new surfaces. The constant search to innovate and surprise.



**CONCRETE**

---

Cape Cod  
Dansk  
Fuso  
Oh!Take  
Sintese

**MARBLE  
& QUARTZITES**

---

Aeterna  
Quartzites  
Timeless  
Unique

**STONE**

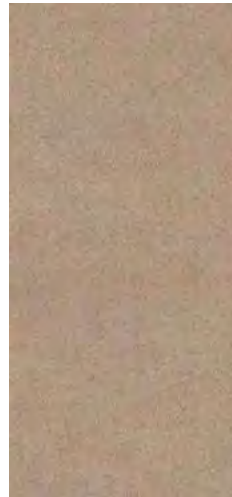
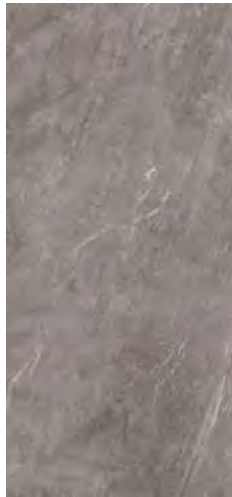
---

Bleu de Savoie  
Lalai  
Ms. Barcelona  
Samba Rock  
Tropezienne  
Zesty

**SYNTHETIC**

---

Folia  
Haptic





**CONCRETE**



# CAPE COD

There are places that create unique lifestyles, a certain way of being unpretentious but also sophisticated, and with experiences that make it all worthwhile. Cape Cod, a peninsula which is north of New York, with houses in a style molded by its first inhabitants - local fishermen, blessed by the extensive coastline of golden sands, is one of these places.

Time and history unfold in Cape Cod as if nothing had changed, bearing the marks of simplicity and local authenticity.

Cape Cod, Portobello's new surface, is immersed in this atmosphere. A concrete that bears the marks of time, as if the wood of those pioneering houses left the spirit of living well behind. Soft, but with personality, Cape Cod invites you into a cozy environment, illuminated by warm colors and a texture that makes you want to touch it.



# CAPE COD



Cape Cod Breeze | V3

Sizes	SKU	Finishes	Places Of Us
120X120	210528ET	EXT RET	CL RE FA



Cape Cod Mist | V3

Sizes	SKU	Finishes	Places Of Us
120X120	210530ET	EXT RET	CL RE FA



Cape Cod Breeze ST | V3

Sizes	SKU	Finishes	Places Of Us
120X120	210529ET	NAT RET	CL RE FA



Cape Cod Mist ST | V3

Sizes	SKU	Finishes	Places Of Us
120X120	210531ET	NAT RET	CL RE FA

---

Sizes	Thickness	Faces	Friction
120X120	7,00	12	0,5

# DANSK

The origins of visual purity, functionality, and formal simplicity are Eastern, but have been improved and conquered their own identity representing Nordic thinking. Portobello has Immersed in the daily life of Copenhagen, with the goal of capturing the essence of that culture. A team of Brazilian architects with the Portobello creative team immersed themselves around architecture and design, observed the cultural traditions and discovered Hygge - an untranslated word that expresses the Danish way of life, which values and promotes happiness and quality of life. The first Creative Collective Portobello collaborated in creating a collection of products that, in the eyes of the group, expressed the Hygge spirit. Metallic parquets with a brushed finish and soft colors represent the attention to details in the ambiances that look for simplicity, but without lacking form and beauty. Metal profiles express the attention to the design function, taken very seriously by the Danes. A mosaic of marble and metal, state that sophistication can also be present and celebrate the joy of living. The reproduction of a minimalist and almost single colored cement surface in warm tones translates the search for the essential and the comfort in living spaces. Light, one of the central elements of Hygge environments, is materialized in a candlestick developed by Officina Portobello. The Candlelight is widely used in the Danish culture, to bring the people around you to an intimate and joyful mood.

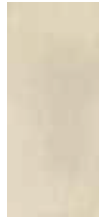


# DANSK



Dansk Cement Graphite | V2

Sizes	SKU	Finishes	Places Of use
120X270	12159E	NAT RET	CL RE FA



Dansk Cement White | V2

Sizes	SKU	Finishes	Places Of use
120X270	12162E	NAT RET	CL RE FA



Dansk Cement Rope | V2

Sizes	SKU	Finishes	Places Of use
120X270	12161E	NAT RET	CL RE FA



| Dansk Cement White

## Complete Structure

Sizes	Thickness	Bedding Joint	Faces	Friction
120x270	7,00	3	4	0,4

DANSK



| Dansk Cement Graphite

# FUSO

A surface that expresses the multiplicity of our time.  
Concrete receives diverse influences and introduces the new  
again.  
Minimalist, but not simplistic. Memories from the adventures  
of Vikings, the crossing of the Alps, and the strength of Etna  
are print in matter.  
Fuso, diversity of uses and shapes for spaces that have  
content.





# FUSO



Fuso Viking | V3

Sizes	SKU	Finishes	Places Of use
160X160	203505E	NAT RET	CL RE FA



Fuso Zermaat | V3

Sizes	SKU	Finishes	Places Of use
160X160	205599E	NAT RET	CL RE FA



| Fuso Viking

## Complete Structure

Sizes	Thickness	Bedding Joint	Faces	Friction
160x160	7,00	-	8	0,4

# FUSO



# OH!TAKE

Oh!Take. Master of Brazilian architecture, Ruy Ohtake always takes us to experiences that surprise us.

Going beyond limits, a constant in his creative process, Ruy challenges the possibilities of material and brings out what is unusual.

The concrete and the color. Boldness and genius. When all is said and done, the simplicity and elegance of the work envelops and enchants us.

Here, the work is superficial.

Sometimes flat, almost obvious if it weren't for the subtleties of color and mix of the small aggregates.

Sometimes organic, unusual and vibrant, creating movement in the vertical planes that we ordinarily call walls, but here deserve to be redefined. Now these vertical planes are a blank canvas for the creator's soul. Soul is poetry in concrete, curves and colors challenging boundaries between design and art.

Oh!Take in Slabs close-ups reveals the infinite surface to the eyes. Colors that are timeless and smooth, however remarkable for the strength of their scale, reveal a new path to the design. The master presents us with alternatives to what's obvious, what's gray, and what's common.

Soul – Curves in yellow (Home), blue (Heaven), white (Mountain), gray (Moon), and red (Cliff) in 30 x 120 cm (11.81 x 47.24 inches) format.

Oh!Take Lastras – Infinite colored surfaces that take you to the mountain (Mountain), forest (Forest), cliff (Cliff), city (City), paradise (Heaven), for indoors (Home) and even to the moon (Moon).



# OH!TAKE



Oh!take Mountain | V2

Sizes	SKU	Finishes	Places Of use
120X270	200090E	NAT RET	CP RE FA
160X160	203267E	NAT RET	CL RE FA



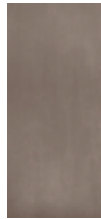
Oh!take Home | V2

Sizes	SKU	Finishes	Places Of use
120X270	200707E	NAT RET	CP RE FA



Oh!take Moon | V2

Sizes	SKU	Finishes	Places Of use
120X270	200091E	NAT RET	CL RE FA
160X160	203265E	NAT RET	CL RE FA



Oh!take City | V2

Sizes	SKU	Finishes	Places Of use
120X270	200092E	NAT RET	CL RE FA
160X160	203263E	NAT RET	CL RE FA



| Oh!Take City

## Complete Structure

Sizes	Thickness	Bedding Joint	Faces	Friction
120x270	7,00	5	6	0,30
160x160	7,00	-	6	

# SINTESE

Brutalist architecture, from daily coexistence with modernist works that crudely reveal concrete. Pure, just the concrete. Concrete and its marks. The surface. The material. The synthesis. A route of projects from Masp to corporate buildings by Slovak architect Hans Broos, which includes the original Parque Portobello Building and Cia. Hering Building in Santa Catarina, made it possible to dive into this architectural language and its marks, printed on concrete. Archeology as design. The evidence revealed was a reference for the process. Every trace, every crack, every reaction with the steel, every impression of a wooden shape. Finally, a synthesis. Of design, of technology, of a look that selects and refines. Sintese is the new Portobello material. Unshakable in revealing herself pure.



# SINTESE



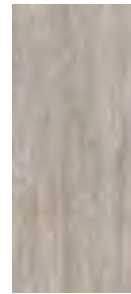
Sintese Grafite | V4

Sizes	SKU	Finishes	Places Of Us
160x160	210017E	NAT RET	CP RE FA
120X120	208894E	EXT RET	CL RE FA



Sintese Platina | V4

Sizes	SKU	Finishes	Places Of Us
160x160	210018E	NAT RET	CL RE FA
120X120	208892E	EXT RET	CL RE FA



Sintese Grafite ST | V4

Sizes	SKU	Finishes	Places Of Us
120x270	208890E	NAT RET	CP RE FA
120X120	208893E	NAT RET	CP RE FA



Sintese Platina ST | V4

Sizes	SKU	Finishes	Places Of Us
120x270	208889E	NAT RET	CP RE FA
120X120	208891E	NAT RET	CP RE FA



Sintese Off White | V4

Sizes	SKU	Finishes	Places Of Us
120X120	210420E	EXT RET	CL RE FA



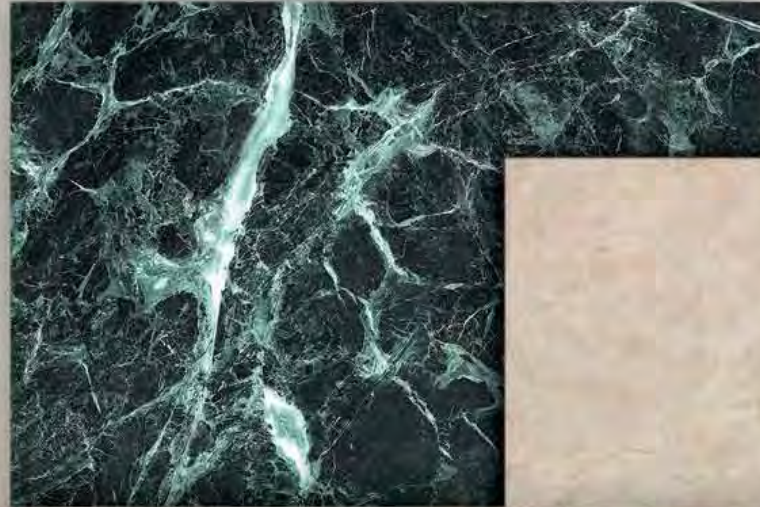
Sintese Off White ST | V4

Sizes	SKU	Finishes	Places Of Us
120X270	210422E	NAT RET	CP RE FA
120X120	210408E	NAT RET	CP RE FA

Sizes	Thickness	Bedding Joint	Faces	Friction
120x270	7,00	1,5	7	0,5
160x160	7,00	1,5	6	-



**MARBLE  
& QUARTZITES**



# AETERNA

In the tapestry of time, Rome, the eternal city, is a beacon of history and timeless beauty, often expressed through the local marble, Travertine.

The classic of perfect proportions, tones, and textures transcends time and is reproduced in a very pure version, based on curation by the discerning eye of design.

Aeterna is the contemporary version of noble Travertine slabs, which are no longer available in nature, the technology and design materialize and transform into raw materials for architecture, interiors and furniture.





# AETERNA



Aeterna Avorio St | V3

Sizes	SKU	Finishes	Places Of use
120X270	206682E	NAT RET	CL RE FA
160X160	210952E	NAT RET	CP RE FA



Aeterna Avorio | V3

Sizes	SKU	Finishes	Places Of use
160X160	206650E	NAT RET	CL RE FA



Aeterna Bianco St | V3

Sizes	SKU	Finishes	Places Of use
120X270	207079E	NAT RET	CL RE FA
160X160	210952E	NAT RET	CP RE FA



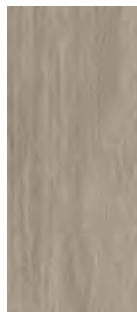
Aeterna Bianco | V3

Sizes	SKU	Finishes	Places Of use
160X160	207087E	NAT RET	CL RE FA



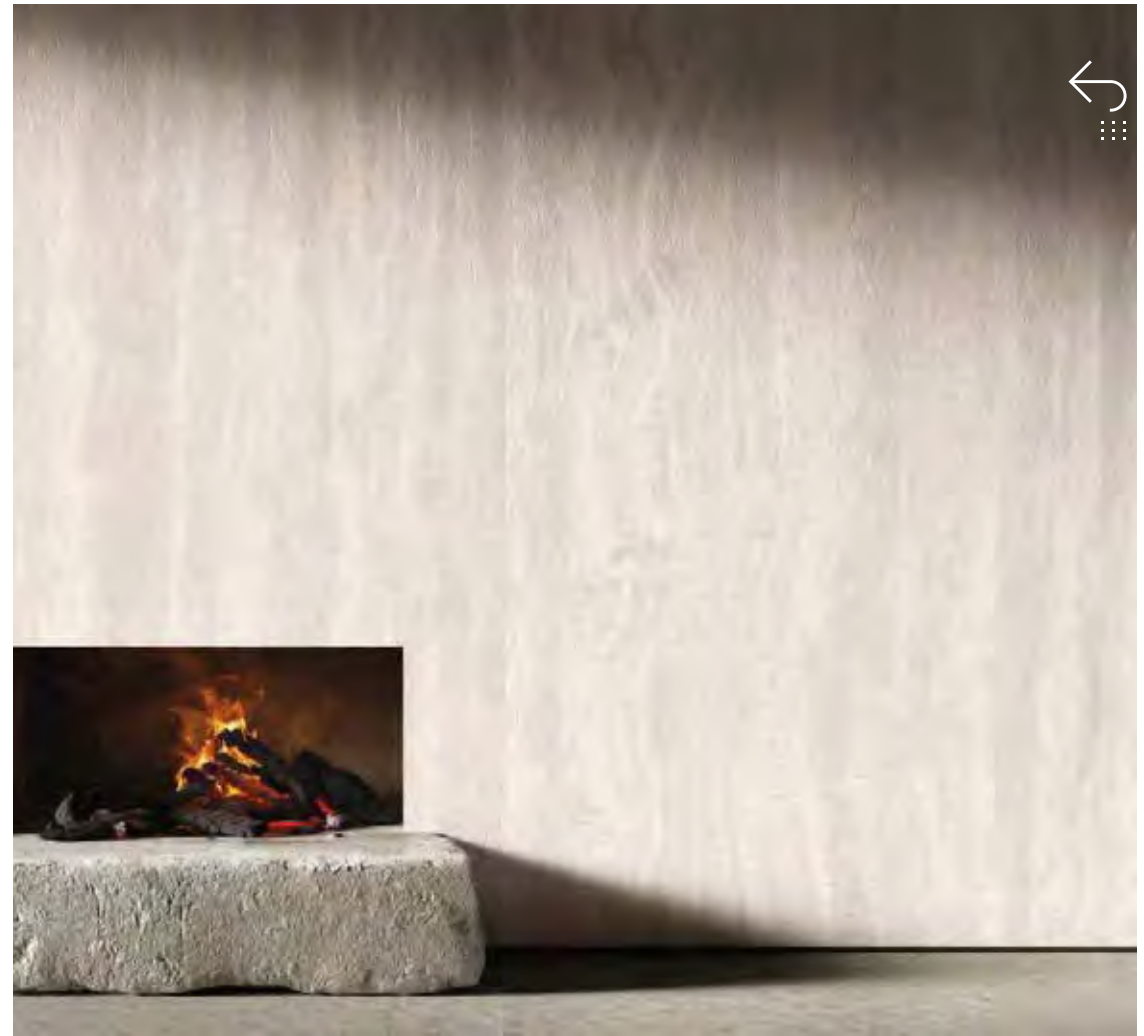
Aeterna Taupe | V3

Sizes	SKU	Finishes	Places Of Us
120X120	208788E	POL RET	CL RE FA



Aeterna Taupe ST | V3

Sizes	SKU	Finishes	Places Of Us
160x160	208885E	NAT RET	CP RE FA
120x270	208886E	NAT RET	CL RE FA



| Aeterna Bianco ST

## Complete Structure

Sizes	Thickness	Bedding Joint	Faces	Friction
120x270	7,00	-	6	0,4
160x160	7,00	-	12	0,4

# AETERNA



| Aeterna Avorio ST

# QUARTZITES

Brazil is rich in mineral formations of quartzites, a very hard rock, with a great diversity of designs and tones and very high mechanical resistance. The advancement of mining technologies is increasingly revealing the beauty of Brazilian quartzites.



■ Moonlight Off White

# QUARTZITES



Taj | V3

Sizes	SKU	Finishes	Places Of Us
120X120	208928E	POL RET	CL RE FA
120X120	210712ET	POL RET	CL RE FA
120X270	210726ET	POL RET	CL RE FA
120X270	208935E	POL RET	CL RE FA



Taj ST | V3

Sizes	SKU	Finishes	Places Of Us
120X270	208938E	NAT RET	CL RE FA
120X270	210723ET	NAT RET	CL RE FA

Sizes	Thickness	Bedding Joint	Faces	Friction
120x270	7,00	1,5	6	0,5



# TIMELESS

Timeless Beauty.



| Apuano Oro

# TIMELESS



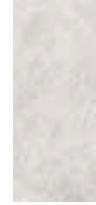
**Apuano Oro | V3**

Sizes	SKU	Finishes	Places Of use
120X270	206136E	NAT RET	CL RE FA
120X270	205898E	POL RET	CL RE FA



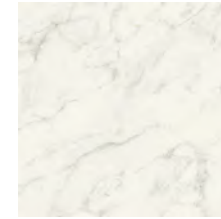
**Golden Quartz | V3**

Sizes	SKU	Finishes	Places Of use
120X270	204675E	POL RET	CL RE FA
120X270	204676E	NAT RET	CL RE FA



**Anima Di Marmo | V2**

Sizes	SKU	Finishes	Places Of Us
120x270	209945E	NAT RET	CL RE FA
120x270	210722ET	NAT RET	CL RE FA
120x270	209377E	POL RET	CL RE FA
120x270	210725ET	POL RET	CL RE FA



**Chiaro Di Versilia | V2**

Sizes	SKU	Finishes	Places Of Us
120X120	210374E	NAT RET	CL RE FA
120X120	210711ET	POL RET	CL RE FA
120X120	210375E	POL RET	CL RE FA
120X120	210707ET	NAT RET	CL RE FA



**Charleston | V2**

Sizes	SKU	Finishes	Places Of use
160X160	203503E	NAT RET	CL RE FA
160X160	206634E	POL RET	CL RE FA



**Opus | V2**

Sizes	SKU	Finishes	Places Of use
160X160	206651E	NAT RET	CP RE FA
160X160	206652E	POL RET	CL RE FA
120X270	206326E	NAT RET	CP RE FA
120X270	206328E	POL RET	CL RE FA



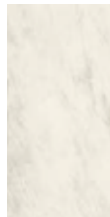
**Speziato | V2**

Sizes	SKU	Finishes	Places Of use
120X270	207409E	NAT RET	CL RE FA
120X270	207410E	POL RET	CL RE FA



**Sirena | V3**

Sizes	SKU	Finishes	Places Of use
120X270	204677E	POL RET	CL RE FA
120X270	204678E	NAT RET	CL RE FA



**Onyx Unique | V2**

Sizes	SKU	Finishes	Places Of use
90X180	203539E	NAT RET	CL RE FA
120X270	200004E	NAT RET	CL RE FA
160X160	203103E	POL RET	CL RE FA
120X270	12178E	POL RET	CL RE FA

## Complete Structure

Sizes	Thickness	Bedding Joint	Faces	Friction
120x270	7,00	-	1	
90x180	9,00	3	10	0,3
160x160	7,00	-	6	0,4

# TIMELESS



TIMELESS





# UNIQUE

Marbles that have personality.



# UNIQUE



Alpissimi | V3

Sizes	SKU	Finishes	Places Of use
120X270	203974E	POL RET	CL RE FA
120X270	203976E	NAT RET	CL RE FA



Borghini Viola | V3

Sizes	SKU	Finishes	Places Of use
120X270	203732E	POL RET	CL RE FA
120X270	203736E	NAT RET	CL RE FA



Nero Venato | V3

Sizes	SKU	Finishes	Places Of use
90X180	203537E	POL RET	CL RE FA
120X270	205897E	POL RET	CL RE FA



The Edge | V3

Sizes	SKU	Finishes	Places Of use
120X270	206295E	NAT RET	CL RE FA
120X270	205896E	POL RET	CL RE FA



Deep Forest | V3

Sizes	SKU	Finishes	Places Of Us
120x270	209946E	NAT RET	CL RE FA
120x270	208934E	POL RET	CL RE FA
120X120	210721ET	NAT RET	CL RE FA
120X120	210724ET	POL RET	CP RE FA



| Borghini Viola

## Complete Structure

Sizes	Thickness	Bedding Joint	Faces	Friction
120x270	7,00	-	6	0,3
90x180	7,00	-	12	0,3
160x160	6,0	-	10	0,4

UNIQUE



I The Edge ST



**STONE**



# BLEU DE SAVOIE

One of the rarest stones in the world, from a pit in Aime, in Savoie, in the French Alps region, it enchants by the particular variation of bluish gray tones. Light veins, almost white, show on the surface with fluidity, and guarantee a contemporary touch in the material.

The 60x120 and 120x120 formats, available in natural and external finishing, make it possible to incorporate all spaces. Bleu de Savoie is also presented in imposing 120x270 and 160x320 slabs, which highlight the details from the stone in natural and polished finishing.

The presentation of this material in porcelain tiles has the aim of allowing its use without extinguishing natural resources, which must be kept for other rare moments.



Bleu de Savoie

# BLEU DE SAVOIE



Bleu De Savoie | V4

Sizes	SKU	Finishes	Places Of use
160X160	203271E	NAT RET	CL RE FA

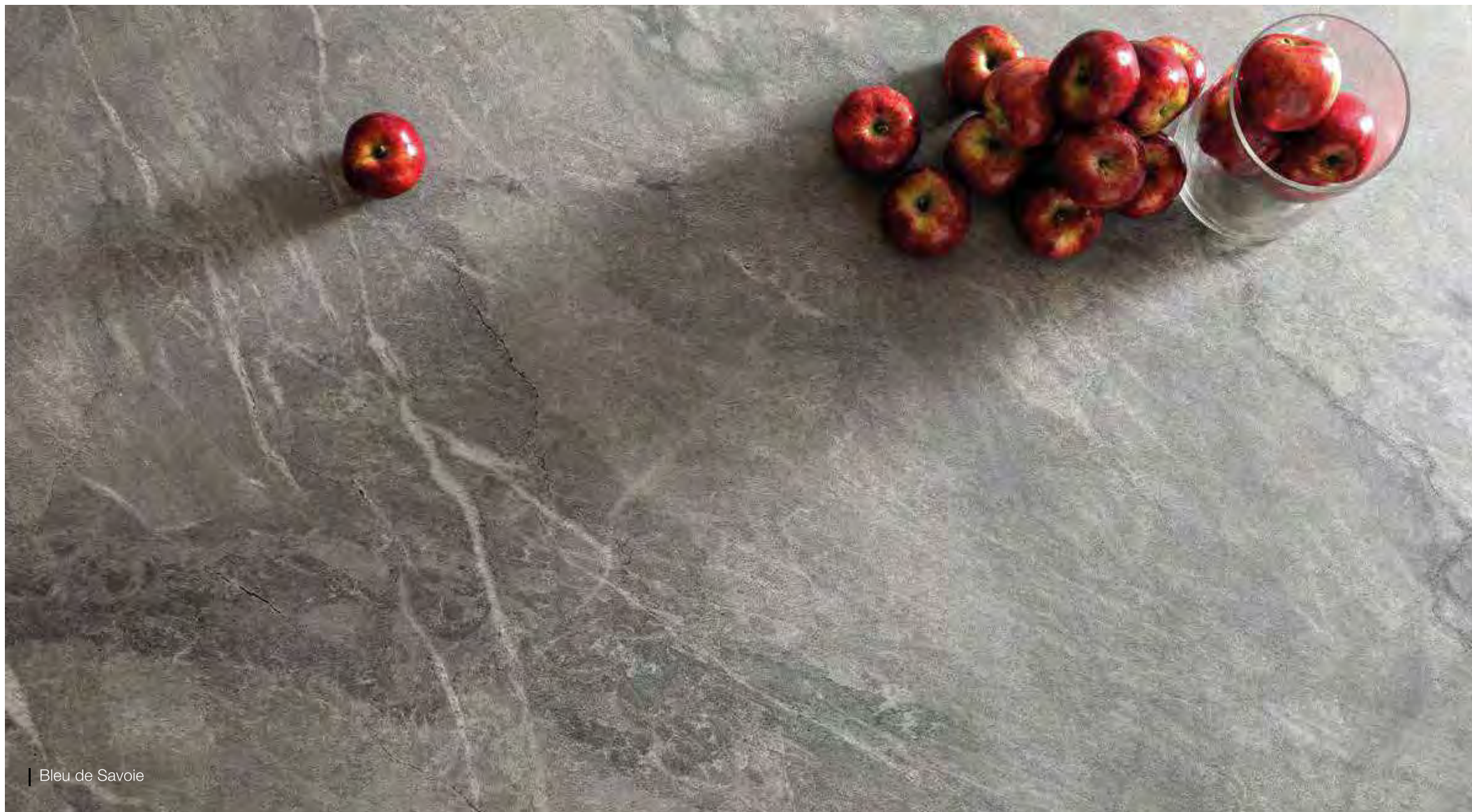


| Bleu de Savoie

## Complete Structure

Sizes	Thickness	Bedding Joint	Faces	Friction
160x160	7,00	-	1	0,4

# BLEU DE SAVOIE



# LALAI

Proper name. Beautiful to say. The perfect raw tone, the fossil fragments in the ideal rhythm, Lalai is unique. Imagination becomes matter. The first time it was stone, the second time, more serene, just the essence. The beauty that exists. It simply exists. Nothing more. Lalai is French by origin, with tropical charm and created for the world. Don't be surprised by desire at first sight.



| Lalai brut



# LALAI



## Lalai Brut | V2

Sizes	SKU	Finishes	Places Of use
120x270	206743E	NAT RET	CL RE FA



Lalai Brut  
Lalai Brut Bordi

### Complete Structure

Sizes	Thickness	Bedding Joint	Faces	Friction
120x270	7,00	-	4	0,3

LALAI



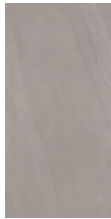
| Lalai Brut

# MS. BARCELONA

Mies van der Rohe, in addition to being one of the leading names of twentieth-century architecture in translating, in a daring, sophisticated and very innovative way, his minimalist austerity, also left some maxims such as "Less is More." The "less is more" may seem simplistic, but it is actually quite sophisticated and elaborate, it is the synthesis of simplicity from quite complex compositions. One of his main works, the German Pavilion made for the world fair of Barcelona, is recognized by the fusion of diverse materials and architectural elements that express in a unique way the "less is more". Ms Barcelona was idealized with the ambition to translate the same thought into a design proposal that, from a fusion of materials like limestones, cements and basalts, creates a striking but minimalist surface that may use veins and elements of natural stones or cement textures with aggregates, in a chromatic balance that converges to something unique and synthetic. The multi-surfaces, with matt finish, with relief for external use, with the brilliance of the polish, plus the incisions creating textures carved in the material for use in walls, express the versatility of Ms Barcelona. A contemporary view of the layers of time: stone, concrete, architecture, history, technology and design ? Ms Barcelona.



# MS. BARCELONA



Ms. Barcelona Antracita | V3

Sizes	SKU	Finishes	Places Of use
160X160	203120E	NAT RET	CL RE FA



Ms. Barcelona Cristal | V3

Sizes	SKU	Finishes	Places Of use
160X160	203121E	NAT RET	CL RE FA



| Ms. Barcelona Cristal

## Complete Structure

Sizes	Thickness	Bedding Joint	Faces	Friction
160x160	7,00	-	8	0,4

# MS. BARCELONA



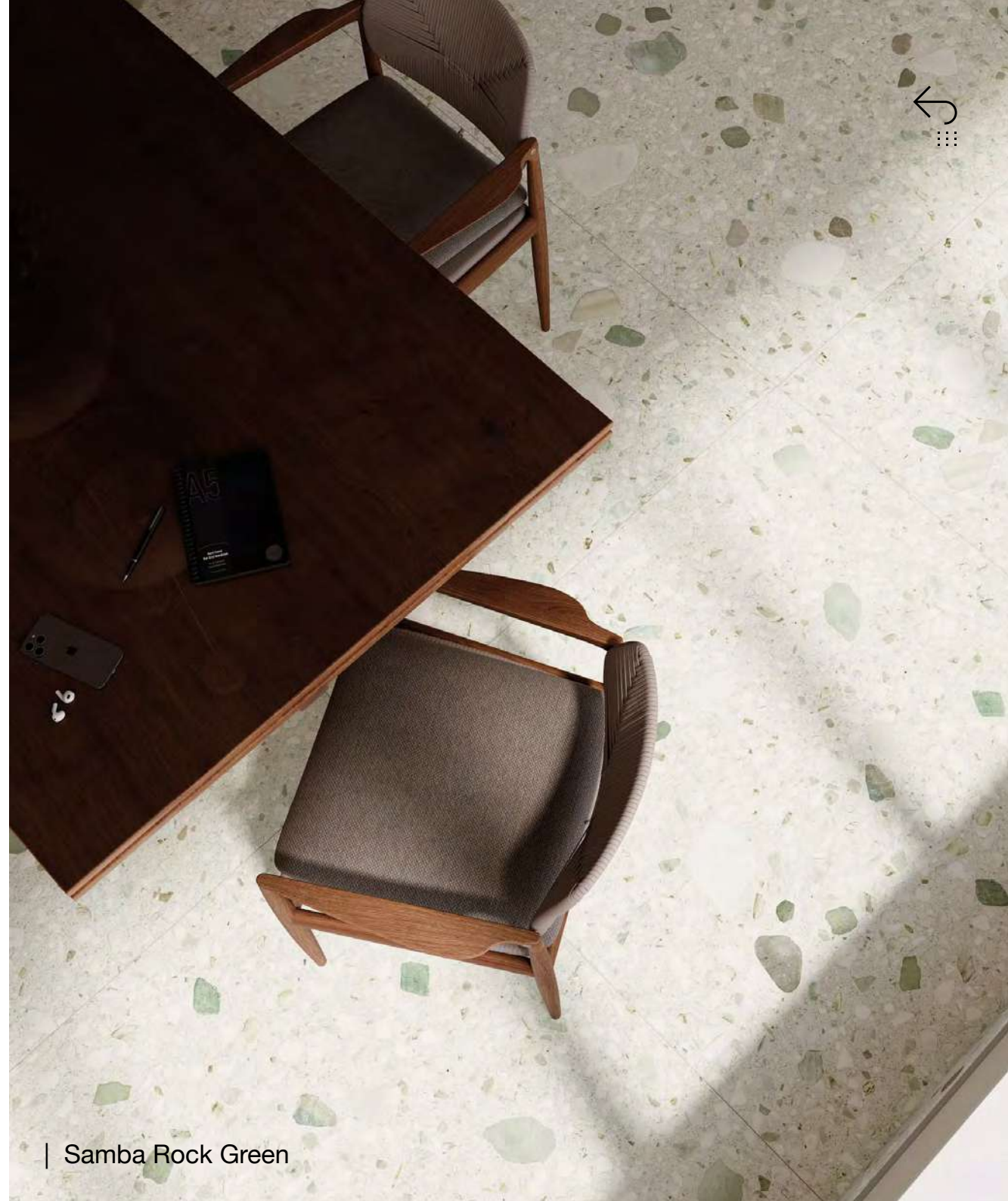
| Ms. Barcelona Antracita

# SAMBA ROCK

A methodology that transforms dialogue into design. When meeting with Marcelo Rosenbaum, the material reveals its own rhythm. Samba Rock pays homage to its roots, while at the same time absorbs the new. Two creative teams, two distinct cultures, two vibrant rhythms that harmonize in the form of terrazzo, a material that knows no boundaries.

A surface that beats with the nobility of Brazilian stones - soapstone, galapagos, paran  - but reveals a multicultural identity. In large sizes or in 20x20 options, terrazzo comes to life in off-white, graphite and green, creating mosaics and new possibilities each time you look. Digital relief technology makes the stone emerge in a dance of textures that invites touch.

Samba Rock. Sustainable terrazzo. An environmental awareness that is not conceptual, it is practical: 25% of the material comes from the circular economy. Nothing is lost - everything is transformed into the beauty needed for the modern home.



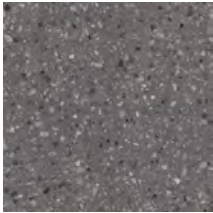
| Samba Rock Green

# SAMBA ROCK



Samba Rock Off White | V3

Sizes	SKU	Finishes	Places Of Us
120X120	210588E	EXT RET	CL RE FA



Samba Rock Graphite | V3

Sizes	SKU	Finishes	Places Of Us
120X120	210591E	EXT RET	CL RE FA



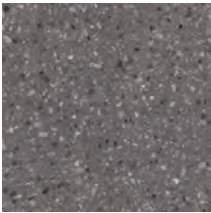
Samba Rock Green ST | V3

Sizes	SKU	Finishes	Places Of Us
120X120	210590E	NAT RET	CP RE FA



Samba Rock Off White ST | V3

Sizes	SKU	Finishes	Places Of Us
120X120	210529ET	NAT RET	CP RE FA



Samba Rock Graphite ST | V3

Sizes	SKU	Finishes	Places Of Us
120X120	210592E	NAT RET	CL RE FA

---

Sizes	Thickness	Faces	Friction
120X120	7,00	6	0,7

# TROPEZIENNE

There is something on the French Riviera that exceeds expectations.

The simple, unpretentious, and naturally sophisticated beauty invites you to live each moment to the fullest, embracing the essence of "savoir-vivre."

Natural materials with warm tones, with its origin in this Mediterranean landscape, are part of the architecture and make up the local atmosphere.

Tropezienne dares to bring this French mood of being sophisticated without intention, naturally (très chic), just like the Limestone of the region, to the surface of Slabs and Large Formats.

Fragments of time, on clay as a raw material, reveal in natural tones a compact and contemporary material, based on the new ceramic technologies.

Tropezienne Blanc and Greige boast the color of the sand in St. Tropez under different summer sunlight.

The more wintry shade, Tropezienne Cendré, complements the collection's palette.



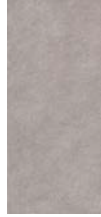


# TROPEZIENNE



Tropezienne Blanc | V2

Sizes	SKU	Finishes	Places Of use
120X270	205653E	NAT RET	CL RE FA



Tropezienne Cendre | V2

Sizes	SKU	Finishes	Places Of use
120X270	205885E	NAT RET	CL RE FA



Tropezienne Greige | V2

Sizes	SKU	Finishes	Places Of use
120X270	205886E	NAT RET	CL RE FA



| Tropezienne Greige

## Estrutura completa

Formato	Espessura	Junta	Faces	Atrito
120x270	7,00	-	7	0,4

# TROPEZIENNE



# ZESTY

Essential and bold, the fusion of limestones and marbles materializes the art and craft of the ceramicist in creating a new matter. The strength and intensity of natural stones immersed in the subtlety of ceramics are not spontaneous— they are the precise exercise of design and the bold pursuit of the ideal balance.

Zesty reveals itself as unique, original, tailored to be recognized without overshadowing the identity of the project. It is a proposal to cover all areas of the home, with textures sculpted on the surface, whether in the natural version or for outdoor spaces. Available in Off White and Light Gray.

A proposal to transcend time, preserve memories, and silently reveal its sophistication.



| Canvas Intense ST

# ZESTY



## Zesty Off White St | V3

Sizes	SKU	Finishes	Places Of Us
120X120	210612E	EXT RET	CL RE FA
120X120	210611E	NAT RET	CP RE FA
120x270	210603E	NAT RET	CL RE FA
160x160	210610E	NAT RET	CP RE FA



## Zesty Light Gray St | V3

Sizes	SKU	Finishes	Places Of Us
120X120	210613E	EXT RET	CL RE FA
120X120	210614E	NAT RET	CP RE FA
120x270	210604E	NAT RET	CL RE FA
160x160	210607E	NAT RET	CP RE FA

---

Sizes	Thickness	Faces	Friction
120X120	7,00	1	-
120X270	7,00	1	0,5
160X160	7,00	1	-



**SYNTHETIC**



# FOLIA

That obvious question about the concept behind a collection doesn't fit here. Not because of a lack of content, but because Folia creative process goes beyond a simple story.

We asked Isay to develop a collection for Portobello. We tested compounds, materials, enamels and firings in a trial-and-error process that not only guided Isay in adjusting the design of the pieces, but also guided us in the search for technological innovations that would make their production viable.

Folia includes thin and very large plates, and the diffuse coloring has something ludic and irreverent.



# FOLIA



Folia Craft | V3

Sizes	SKU	Finishes	Places Of use
120X270	206745E	NAT RET	CL RE FA



Folia Cinza | V3

Sizes	SKU	Finishes	Places Of use
120X270	206744E	NAT RET	OP RE FA



| Folia Cinza

## Complete Structure

Sizes	Thickness	Bedding Joint	Faces	Friction
120x270	7,00	-	3	0,4

# FOLIA



I Folia Cinza



# HAPTIC

There are places that create unique lifestyles, a certain way of being unpretentious yet sophisticated, with experiences that make it all worthwhile.

Cape Cod, a peninsula with houses shaped by the style of its first residents—local fishermen privileged by the vast coastline of golden sands—located north of New York, is one of those places.

Time and history renew themselves in Cape Cod as if nothing changes, carrying the marks of simplicity and local authenticity.

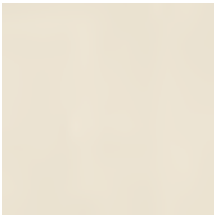
Cape Cod, the new Portobello surface, is immersed in this atmosphere. A concrete that bears the marks of time, as if the wood from those pioneer houses had imprinted the spirit of good living.

Soft yet full of personality, Cape Cod invites you into a cozy environment, illuminated by warm colors and a texture that makes you want to touch.



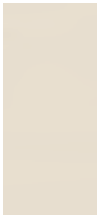
| Canvas Intense ST

# HAPTIC



Canvas Intense St | V1

Sizes	SKU	Finishes	Places Of Us
120X120	207667E	NAT RET	RE FA



Canvas Light St | V1

Sizes	SKU	Finishes	Places Of Us
120X270	207603E	NAT RET	CL RE FA

## ABBREVIATIONS

### VARIATION OF TONES

V1 - Uniform Appearance

V2 - Slight Variation

V3- Moderate Variation

V4 - Strong Variation

### TECHNICAL ATTRIBUTES

Y (Yes) - Color Body  
(Massa Colorida)

### EDGES

Retificado

Bold

### SURFACES

NAT - Natural

EXT - External

POL - Polished

MAT - Matte

BR - Glossy

Silk

### APPLICATION

Floors

Walls

Skirting

### USE

#### FLOORS

CL - Commercial Buildings (Light)

CL - Commercial Buildings (Heavy)

IU - Industrial and Urban

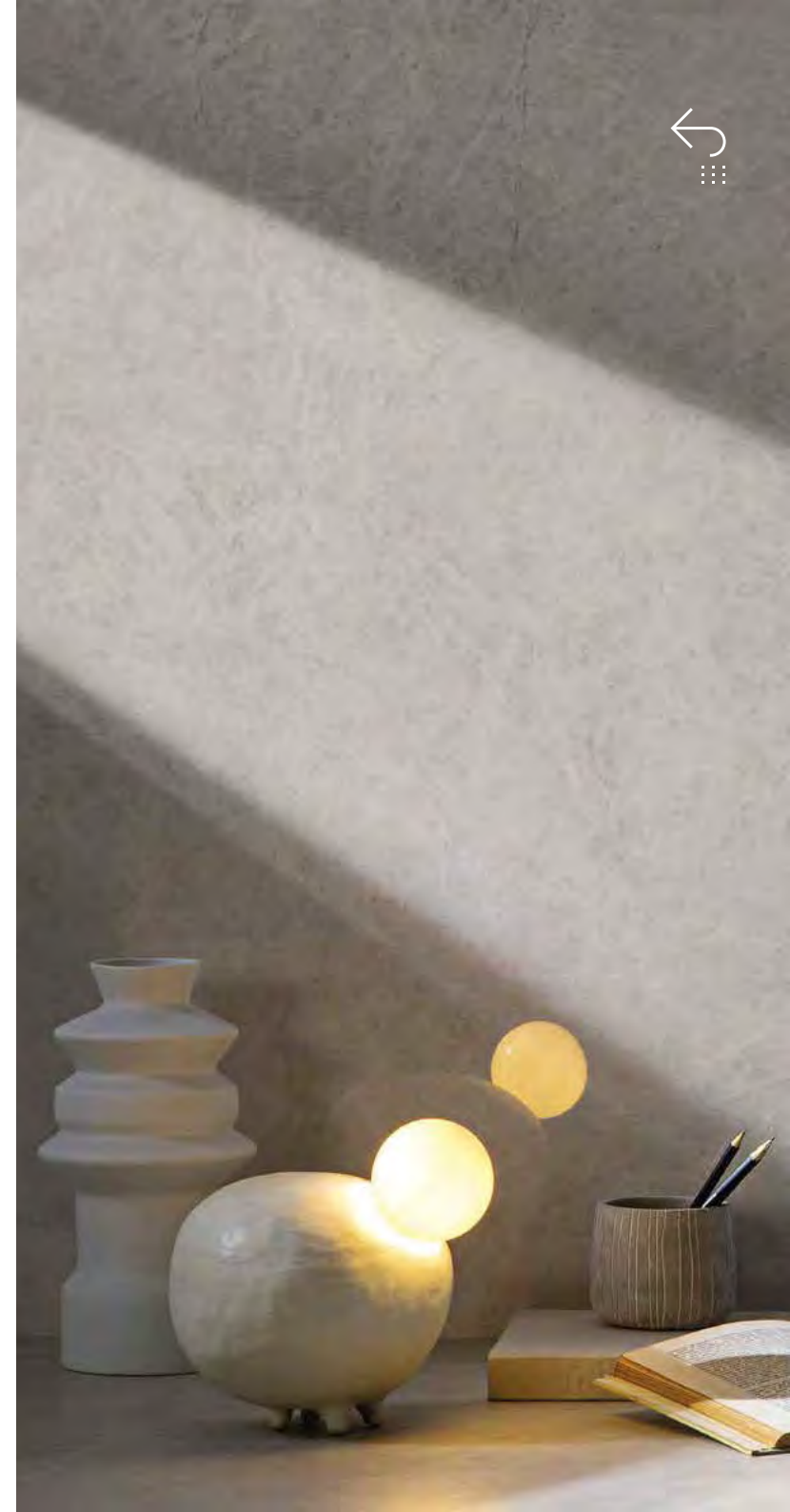
RE - Residential

#### WALLS

FA - Coating for Internal  
Walls and Facades

PE - Coating for  
External Walls

RI - Coating for  
Internal Walls



Portobello

[PORTOBELLO.COM.BR/EN](http://PORTOBELLO.COM.BR/EN)