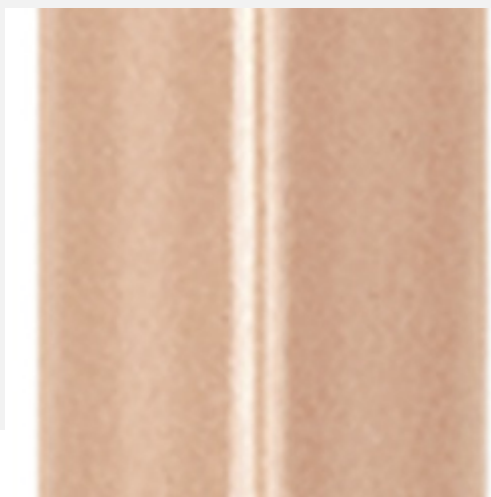


Technical Specifications



Filete Terralma Sardenha

Line Terralma

Tipology	Code		
Wall	200754E		
Size (cm)	Thickness (mm)	Work Size (cm)	
1,5X37	15.00	1,5X37,2	
Edge	Surface	Tonality Variation	
Bold	Glossy	V1	

Este produto é confeccionado a partir de peças de porcelanato e demais acessórios, sendo assim, não possui especificações técnicas e enquadra-se como Peça Especial.

The Ceramic Tiles Standard, ISO 13006, is not applicable to decorative accessories or complements such as edges, corners, baseboards, trim, frames, corners, reliefs, curved plates and other accessory parts or inserts. Plates produced by processes other than extrusion or dry pressing are exempt from this standard.

If in doubt, consult our Customer Service (SAC) at 0800 648 2002 or sac@portobello.com.br

For the use of this coating on external walls up to 6 meters high, follow the following guidelines:

Use ACIII adhesive mortar indicated for facade use and compatible with the product's shape, in buildings up to 2 floors. Check with the salesperson for the most suitable mortar. Respect the existing movement and desolidation joints in the architectural design.

On external walls that do not have coverage and side protection, it is mandatory to protect the top and side of the wall with a drip edge or flashing.

The seating joints must be used according to the specific indication of each product.

The grout used to seal the seating joints must be specific for facades.

ATTENTION: Single-porous facades are not recommended for regions with negative temperatures for prolonged periods, such as in Europe and the United States, as established in ISO 13006 for external walls.

Reaction with fire: Ceramic coatings are sintered at high temperatures and therefore do not present in their final composition organic or volatile compounds of any nature, classifying them as Class I - non-combustible.

Portobello



Portobello SA - Fábrica | contato@portobello.com.br
SAC: 800 648 2002 1 BR 101 - Km 163 - Cx. Postal 15
Tijucas/SC - Brasil - 88200-000