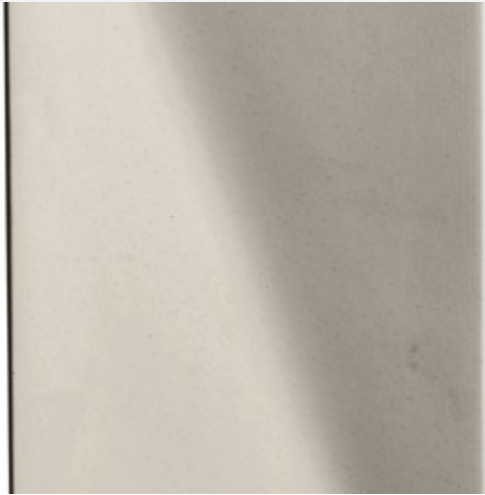


Technical Specifications



Sao Conrado Cement Reverse

Line Gavea

Tipology	Code		
Mosaic	28900ET		
Size (cm)	Thickness (mm)	Work Size (cm)	
15X40	45.0	14,5X39,5	
Edge	Surface	Tonality Variation	
	N/A	V2	

Este produto é confeccionado a partir de peças de porcelanato e demais acessórios, sendo assim, não possui especificações técnicas e enquadra-se como Peça Especial.

The Ceramic Tiles Standard, ISO 13006, is not applicable to decorative accessories or complements such as edges, corners, baseboards, trim, frames, corners, reliefs, curved plates and other accessory parts or inserts. Plates produced by processes other than extrusion or dry pressing are exempt from this standard.

If in doubt, consult our Customer Service (SAC) at 0800 648 2002 or sac@portobello.com.br

Reaction with fire: Ceramic coatings are sintered at high temperatures and therefore do not present in their final composition organic or volatile compounds of any nature, classifying them as Class I - non-combustible.

Portobello



Portobello SA - Fábrica | contato@portobello.com.br
SAC: 800 648 2002 1 BR 101 - Km 163 - Cx. Postal 15
Tijucas/SC - Brasil - 88200-000